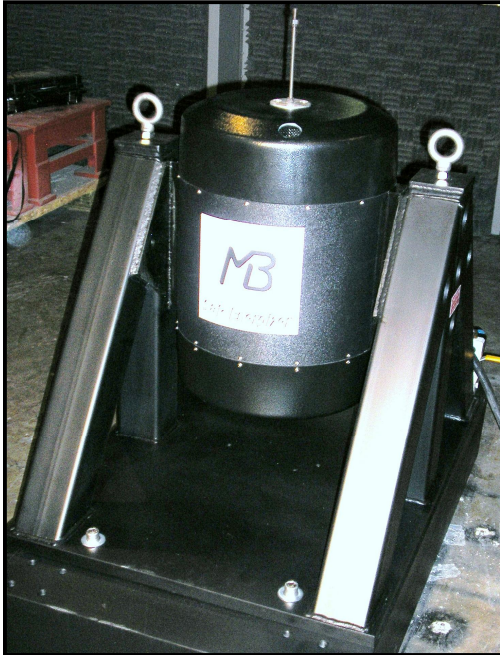
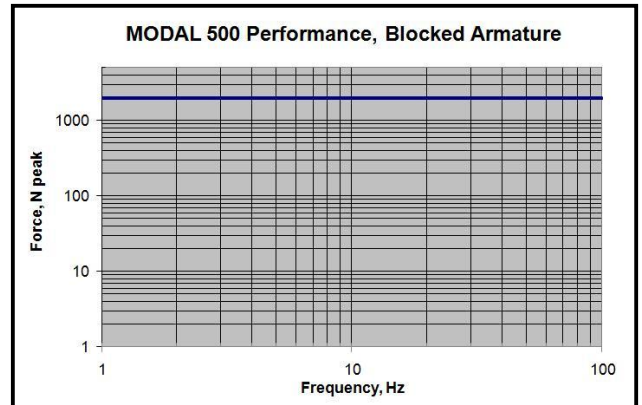


MODAL 500 Modal Exciter

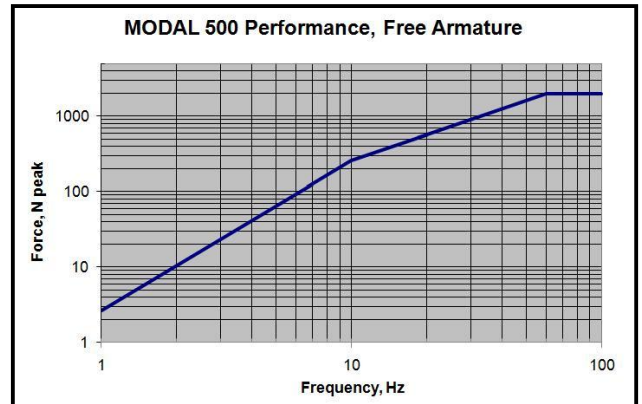


**MODAL 500 in Trunnion Base
(other base designs available)**

Blocked Armature: high stiffness reflected by test item back into MODAL 500 and no movement of MODAL 500 body. A measure of low frequency force output



Free Armature: no stiffness reflected by test item back into MODAL 500 and no movement of MODAL 500 body. A measure of low frequency force output



MODAL 500 Technical Specifications (Air Bearings for Armature Guidance)

Force Output with Forced Air cooling
Force Output with Ambient Air cooling
Stroke
Velocity
Acceleration
Frequency Range
Moving Element Weight
Moving Element Axial Resonance
Driven-Axis Stiffness

Exciter Weight, incl. Trunnion Base
Stinger Attachment
Shaker Attachments

Dimensions
Drive Cable Length
Accessory Kit

Cooling
Force Sensor (optional)

- * 2,000N pk sine excitation (450 lbf); 1,300N RMS random (290 lbf)
- * 1,000N pk sine excitation (225 lbf); 650N RMS random (145 lbf)
- * 50mm peak-to-peak (2 in.)
- * 1.75m/s peak (70 inches/second)
- * 68 g pk continuous sine
- * DC-1000 Hz usable to 3000 Hz
- * Less than 3.0kg (6.6 lbs.)
- * Approximately 3,000 Hz
- * Air bearings provide outstanding sine waveform purity especially at low frequencies where flexure distortion can be troublesome (Quiet, portable compressor supplies air to bearings)
- * 200kg (440 pounds)
- * M6 (1/4"-28) female thread on shaker armature
- * Floor mount with trunnion base; suspension mount with multiple turnbuckles
- * 457mm X 355mm Footprint X 516mm High (18+X 14+X 20 5/16+)
- * 10m (32 ft.); up to 50m (160 ft.) optional
- * Turnbuckles, wrenches, M6/M10/M4 stingers X 400mm long; (Optional bolt-on-masses for additional inertia with nuts & bolts)
- * Portable unit; optional Quiet Enclosure < 60dBA; or shop air
- * 2,225N (500 lbs.) tension & compress; 10 mV/lb (2248 mV/kN)