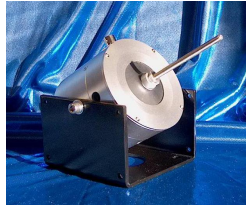
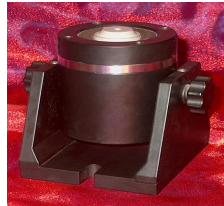


MODAL EXCITATION PRODUCT LINE

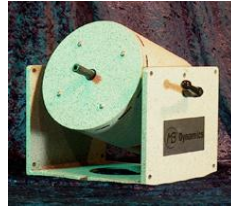
MODAL 2



MODAL 10



MODAL 25



MODAL 50



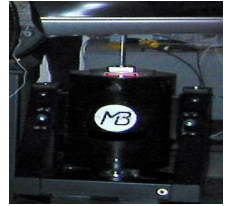
MODAL 110



MODAL 250



MODAL 500



	Baby MODAL	Newest MODAL	Compact	Top Seller	Great Force & Stroke	Large Test Items	Larger Test Items
Force (cooled)	N/A	10 lbf (45N pk)	25 lbf (110N)	50 lbf (220N)	110 lbf (500N)	225 lbf (1000N)	450 lbf (2000N)
Force (no cooling)	2 lbf (9N)	5 lbf (22N pk)	13 lbf (55N)	25 lbf (110N)	55 lbf (250N)	110 lbf (500N)	225 lbf (1000N)
Stroke (p-p)	0.16" (4mm)	0.3" (8mm)	1" (25mm)	1" (25mm)	1.5" (38mm)	2" (50mm)	2" (50mm)
Bandwidth	DC-10kHz	DC-12kHz	DC-5kHz	DC-5kHz	DC-6.5kHz	DC-4kHz	DC-3kHz
Weight	4.8 lbs (2.2kg)	18 lbs (8kg)	30 lbs (14kg)	55 lbs (25kg)	48 lbs (22kg)	250 lbs (115kg)	450 lbs (205kg)
Stinger attachment	Threaded	Threaded	Chuck and Collet	Chuck and Collet	Chuck and Collet	Threaded	Threaded
Stinger thru-hole	YES	YES	YES	YES	YES	YES	YES
Dimensions	4.3" x 3.5" x 3.5" (110 x 90 x 90)	5" x 4" x 6" (125 x 100 x 150)	9" x 7.5" x 9.25" (230 x 190 x 235)	11.5" x 7.5" x 9.25" (290 x 190 x 235)	11.75" x 10.75" x 12" (300 x 275 x 305)	17.19" x 18" x 14" (435 x 460 x 355)	17.19" x 18" x 17" (435 x 460 x 430)